

Xerox® WorkCentre® 3655i

Letter / A4

Black-and-white

Multifunction Printer



Xerox® WorkCentre® 3655i Multifunction Printer

Stay one step ahead.



Xerox® WorkCentre® 3655i Multifunction Printer

Xerox® ConnectKey® Technology gives you the freedom and convenience to work when you want, where you want, by keeping you seamlessly connected to the tools that drive your business forward. For more information, visit www.connectkey.com.

Work from anywhere.

The WorkCentre 3655i allows your staff to control device functions from any workstation. The Remote Control Panel makes it more convenient to train users and for IT staff to remotely view and monitor the user interface.

Xerox® devices built on ConnectKey Technology support a Wi-Fi Direct connection that lets you print from your mobile device without having to connect to a network.

Xerox enables secure and accurate printing and scanning with a continuum of mobile options that fit your environment, with free print and scan apps, such as Xerox® Mobile Link App, plus a robust set of mobile enterprise solutions.

Learn more about why Xerox is the only choice for today's mobile professionals by visiting www.xerox.com/mobile.

A better way of working.

Experience a simplified, and intuitive user interface that can be tailored for your individual business needs. Easily create a workflow that enables you to scan information to your selected destinations, (email, desktop, network folders, cloud repositories) in secure text searchable formats, at the touch of a button. This saves time, and allows more to be done with the information you scan and store.

Embedded apps allow you to easily connect your mobile workers to the device. Xerox App Gallery allows you to download new apps, such as Print from DropBox™ and Scan to Microsoft® Office 365 directly from the user interface. Xerox® ConnectKey® Technology helps to streamline how your business deals with critical information—in-house or in the cloud.

Apps are available at the Xerox App Gallery. Visit www.xerox.com/AppGallery.

Real cost savings for the real world.

Xerox® print drivers based on Microsoft® Windows® give you the ability to save different settings per application, minimizing the need to make changes and reducing the risk of potential errors. Xerox® ConnectKey® Technology evolves with your needs by restricting usage and regulating printing. The User Permission control integrates with your internal authentication system, allowing you to prevent pre-determined or non-authenticated users from seeing specific features on the user interface.

Secure your data.

ConnectKey Technology provides advanced features and technologies to help ensure your company's confidential information stays secure. Our standard security features include AES 256-bit hard disk encryption, McAfee® protection powered by Intel Security, image overwrite, secure print with timed deletion and emailing to external mail servers.

For more information about how Xerox helps make you more secure, visit www.xerox.com/security.



To learn more about ConnectKey Technology-enabled features, go to www.xerox.com/ConnectKeyEG



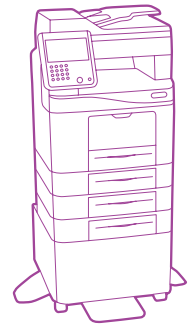
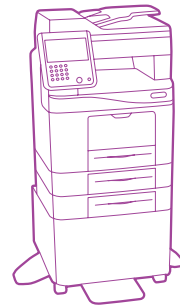
More flexibility regardless of location.

Improve your mobile printing experience.

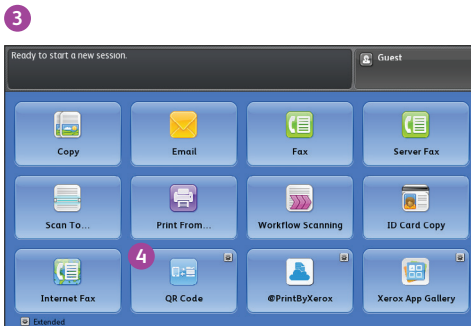
- **Apple® AirPrint™.** Print email, photos and important office documents directly from your Apple iPhone® or iPad® with no drivers to install. With AirPrint, your iPhone or iPad automatically locates and connects to the AirPrint-enabled device over your office Wi-Fi network.
- **Xerox® Print Service Plug-in for Android™.** Android printing is simple without third-party apps or print drivers. This plug-in lets you easily print to a Xerox® ConnectKey Technology-enabled MFP through a wireless network.

Xerox® Easy Translator Service.

This optional service allows customers to scan a document and receive a translated print and/or email notification. Users can also send an image from an iOS or Android device, or a PC, that is forwarded for translation. For more information, visit <https://xeroxtranslates.com>



Whether on a desktop or floor-standing, the Xerox® WorkCentre® 3655i Multifunction Printer offers the right configuration for any office environment.



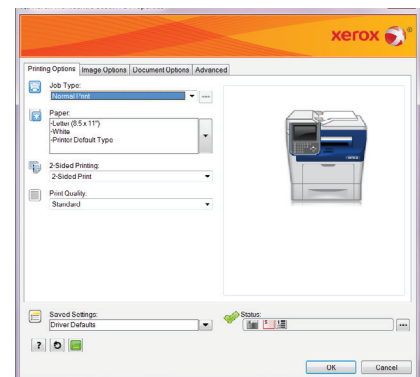
- 1 60-sheet Duplex Automatic Document Feeder accepts custom media sizes from 5.5 x 5.5 in. to 8.5 x 14 in. (139.7 x 139.7 mm to 216 x 356 mm).
- 2 The large 8.5 x 14 in. (216 x 356 mm) platen glass supports a wide range of media sizes.
- 3 The WorkCentre 3655i includes a 7-inch touch screen with easily understood instructions and help screens.
- 4 Standard apps for extra convenience. Xerox App Gallery, PrintByXerox and QR Code help with mobile printing and pairing and loading new apps.
- 5 An easily accessible USB port allows users to quickly print from or scan to any standard USB memory device.
- 6 250-sheet output tray with sensor.
- 7 The Convenience Stapler staples up to 20 sheets of 20 lb. bond / 75 gsm media (Exclusively available on WorkCentre 3655i/X).
- 8 150-sheet Bypass Tray handles custom media sizes from 3 x 5 in. to 8.5 x 14 in. (76.2 x 127 mm to 216 x 356 mm).
- 9 The standard 550-sheet paper tray handles media sizes from 5.5 x 8.27 in. to 8.5 x 14 in. (139.7 x 210 mm to 216 x 356 mm).
- 10 Choose up to 3 additional 550-sheet paper trays for media sizes from 5.5 x 8.27 in. to 8.5 x 14 in. (139.7 x 210 mm to 216 x 356 mm) (optional), increasing the total paper capacity to 2,350 sheets.
- 11 Optional stand provides storage for toner cartridges, paper and other supplies.
- 12 The optional Xerox® USB Wireless Adapter allows you to connect the WorkCentre 3655i to your wireless network.

Keep your costs under control.

With the Xerox® WorkCentre® 3655i, you'll impact your bottom line – and impress your customers.

- **Customize your print driver settings for economy and efficiency.** For example, choose N-up for printing multiple pages on a single sheet as your default. Adjust settings for specific applications, such as always printing emails as duplex pages.
- **Print responsibly.** By default, our print driver is set to two-sided printing, and the Earth Smart feature allows you to select other default settings that encourage responsible usage, such as no printing banner pages.

- **Easy, accurate billing;** The WorkCentre 3655i has the ability to connect to the network to automatically submit meter readings so that toner replenishment can be streamlined to enable more productivity.
- **Manage and track device usage.** Xerox® Standard Accounting provides reports for greater cost control of all device functions. Advanced solutions from Xerox Business Innovation Partners deliver even more helpful tools for larger office environments.



Xerox® WorkCentre® 3655i

ConnectKey®

The WorkCentre 3655i Multifunction Printer is built on Xerox® ConnectKey® Technology. For more information, visit www.connectkey.com.

Device Specifications		WorkCentre 3655i/S	WorkCentre 3655i/X
Speed		Up to 47 ppm letter / Up to 45 ppm A4	
Duty Cycle		Up to 150,000 pages / month ¹	
Hard Drive / Processor / Memory		Minimum 250 GB HDD / 1 GHz Dual-core / 2 GB	
Connectivity		10/100/1000Base-T Ethernet, High-Speed USB 2.0 direct print, Wi-Fi Direct with Optional Xerox® USB Wireless Adapter	
Controller Features		Unified Address Book, Remote Control Panel, Online Support (accessed from the user interface and print driver), Configuration Cloning	
Copy and Print			
Copy and Print Resolution		Copy: Up to 600 x 600 dpi; Print: Up to 1200 x 1200 dpi	
First-print-out Time (as fast as)		Copy: As fast as 12 seconds; Print: As fast as 8 seconds	
Page Description Languages		Adobe® PostScript® 3™, PDF, PCL 5c / PCL 6, XML Paper Specification (XPS®)	
Print Features		Print from USB, Encrypted Secure Print, Xerox® Earth Smart Driver Settings, Job Identification, Store and Recall Driver Settings, Bi-directional Real-time Status, Scaling, Job Monitoring, Application Defaults, Two-sided Printing (as default), Hold All Jobs	
Mobile Printing and Apps	Standard	Apple® AirPrint™, Mopria Certified, QR Code App, Xerox App Gallery App, PrintByXerox App	
	Free Download	Xerox® Print Service Plug-in for Android, Mopria™ Print Service Plug-in for Android™, Xerox® Mobile Link App	
	Optional	Xerox® Mobile Print, Xerox® Mobile Print Cloud, Xerox® Easy Translator Service	
Scan	Standard	Destinations: Scan to Mailbox, Scan to USB, Scan to Email, Scan to Network; File Formats: PDF, PDF/A, XPS, JPEG, TIFF; Convenience Features: Scan to Home, Single Touch Scan, Searchable PDF, Single/Multi-Page PDF / XPS / TIFF, Encrypted / Password Protected PDF, Linearized PDF / PDF/A	
	Optional	ConnectKey® for DocuShare®, Xerox® Scan to PC Desktop® Professional, other solutions available through various Xerox Business Innovation Partners	
Fax		Internet Fax, Server Fax	Embedded Fax ² , LAN Fax, Internet Fax, Server Fax
Security	Standard	McAfee® Embedded, McAfee ePolicy (ePO) Compatible, HDD Overwrite, AES 256-bit Encryption (FIPS 140-2 compliant), SHA-256 Hash Message Authentication, Common Criteria Certification (ISO 15408) ³ , Encrypted Secure Print, Secure Fax, Secure Scan, Secure Email, Cisco® TrustSec Identity Services Engine (ISE) Integration, Network Authentication, TLS, SNMPv3, Audit Log, Access Controls, User Permissions	
	Optional	McAfee Integrity Control, Smart Card Kit (CAC/PIV, .NET), Xerox® PrintSafe Software	
Accounting	Standard	Xerox® Standard Accounting (Copy, Print, Scan, Fax, Email), Network Accounting Enablement	
	Optional	Equitrac Express®, Equitrac Office®, YSoft® SafeQ®, other network accounting solutions available through various Xerox Business Innovation Partners	
Paper Input	Standard	Duplex Automatic Document Feeder: 60 sheets; Custom sizes: 5.5 x 5.5 in. to 8.5 x 14 in. / 139.7 x 139.7 mm to 216 x 356 mm	
		Bypass Tray: 150 sheets; Custom sizes: 3 x 5 in. to 8.5 x 14 in. / 76.2 x 127 mm to 216 x 356 mm	
	Optional	Tray 1: 550 sheets; Custom sizes: 5.5 x 8.27 in. to 8.5 x 14 in. / 139.7 x 210 mm to 216 x 356 mm	
		Up to 3 Additional Trays: 550 sheets each; Custom sizes: 5.5 x 8.27 in. to 8.5 x 14 in. / 139.7 x 210 mm to 216 x 356 mm	
Total Capacity (Std. / max.)		700 / 2,350 sheets	
Paper Output	Standard	250 sheets, automatic two-sided	
Finishing		NA	Offline Convenience Stapler: 20-sheet, single position
Warranty		One-year on-site warranty, earn free service coverage with Xerox eConcierge®, Xerox Total Satisfaction Guarantee	

¹ Maximum volume capacity expected in any one month. Not expected to be sustained on a regular basis; ² Requires analog phone line; ³ Undergoing evaluation.

Device Management

Xerox® CentreWare® Internet Services, Xerox® CentreWare® Web, Apple® Bonjour®, Low supplies email alerts

Print Drivers

Windows® XP/2003 Server/2008 Server/2012 Server/Vista/7/8/9, Mac OS® 10.5 and higher, Oracle® Solaris 9, 10, Redhat® Enterprise Linux®, Fedora® Core 12-15, HP-UX® 11iv2, IBM® AIX® 5, SUSE®, Xerox® Global Print Driver®, Xerox® Mobile Express Driver®

Media Handling

Duplex Automatic Document Feeder: Simplex: 13 to 32 lb. bond / 50 to 125 gsm; Duplex: 16 to 32 lb. bond / 60 to 125 gsm; Bypass Tray, Tray 1 and 3 Additional Trays (Optional): 16 lb. bond to 80 lb. cover / 60 to 216 gsm

Media Types

Plain, punched, letterhead, Lightweight Cardstock, Cardstock, Recycled, Bond, Labels, Pre-printed, Envelopes, Custom.

For a complete list, visit www.xerox.com.

Dimensions (W x D x H)

22 x 21.3 x 22.7 in. / 560 x 541 x 577 mm; Weight: WorkCentre 3655i/S: 56 lb. / 25.4 kg; WorkCentre 3655i/X: 58 lb. / 26.3 kg

Certifications

FCC Part 15, Class A, FCC Part 68, CE Mark applicable to Directives 2006/95/EC, 2004/108/EC and 1999/5/EC, UL 60950-1/CSA 60950-1-07, 2nd Edition, EAC, RoHS Directive 2011/65/EU, WEEE Directive 2012/19/EU, ENERGY STAR® qualified. To view the latest list of certifications, go to www.xerox.com/OfficeCertifications.

Supplies Recycling Program

Consumables for the WorkCentre 3655i are part of the Xerox Green World Alliance Supplies Recycling Program. For more information, please visit the Green World Alliance website at www.xerox.com/gwa.

What Comes in the Box

- WorkCentre 3655i Multifunction Printer
- Toner Cartridge (6,100 page capacity*)
- Drum Cartridge (68,000 pages**)
- Quick Installation Guide, Product Information Guide, Driver CD, Documentation CD (User Manual, System Admin Guide)
- Power Cable
- Fax Cord (WorkCentre 3655i/X)

Supplies and Options

Standard Toner Cartridge: 6,100 pages*

High Capacity Toner Cartridge:

14,400 pages*

Extra-high Capacity Toner Cartridge:

25,900 pages*

Drum Cartridge: 68,000 pages**

Staple Cartridge (3,000 staples)

550-sheet Feeder

Stand

Wireless Networking Adapter

McAfee Integrity Kit

Common Access Card Enablement Kit

Part No. 106R02736

106R02738

106R02740

113R00773

108R00823

097S04625

497K14670

497K11500

320S00665

498K17546

* Average standard pages. Declared Yield in accordance with ISO/IEC19752. Yield will vary based on image, area coverage and print mode.

** Approximate pages. Declared Yield on Drums based on an average job size of 3 pages A4/letter size. Drum yield will vary based on job run length, media type, size, weight, orientation, and usage patterns.

For more detailed specifications, go to www.xerox.com/office/WC3655Specs. Build and configure your own Xerox® WorkCentre® 3655i Multifunction Printer at www.buildyourownxerox.com/connectkey. For more information, visit us at www.xerox.com/office.

